

EMSI



1187 Alturas Drive
Moscow, Idaho 83843
2088823567

Program Report



Economic Modeling Specialists, Inc. www.economicmodeling.com

EMSI

Region Info

Region: San Francisco larger MSA

County Areas: Alameda, California (6001), Contra Costa, California (6013), Marin, California (6041), San Francisco, California (6075), San Mateo, California (6081), Santa Clara, California (6085)

Executive Summary

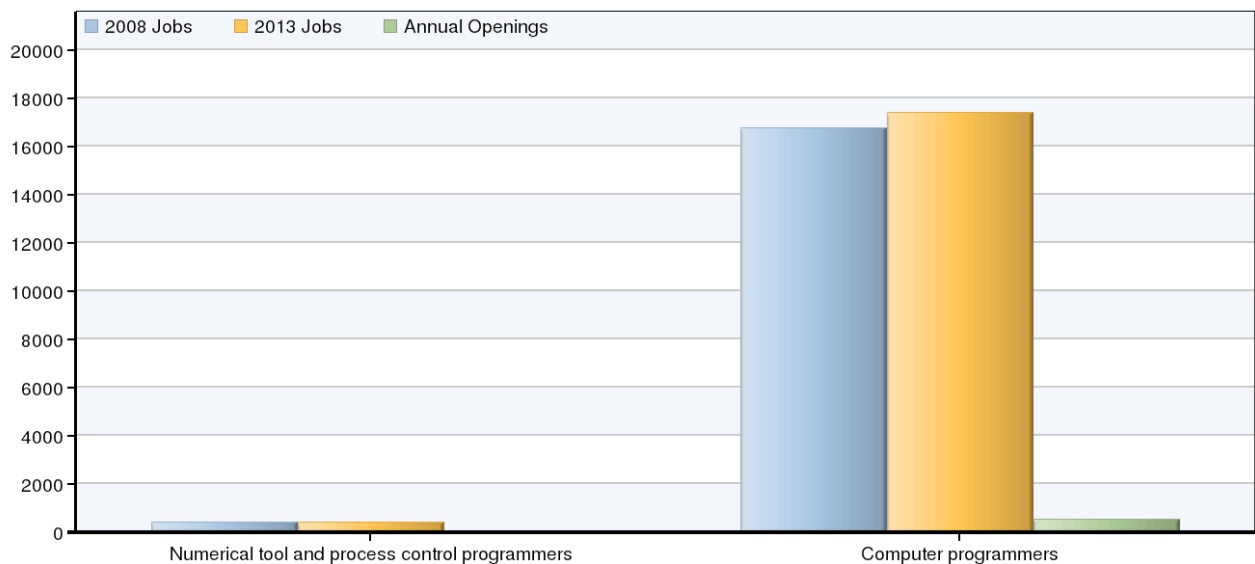
Program
Computer Software Development (TOP 0707.00)

Program Occupations
Computer programmers (SOC 15-1021)
Numerical tool and process control programmers (SOC 51-4012)

Summary	
2008 Occupational Jobs	17,194
2013 Occupational Jobs	17,762
Total Change	568
Total % Change	3%
2009 Median Hourly Earnings/Worker	\$36.10
Annual Openings	540
Total Replacement Jobs	2,130

Source: EMSI Complete Employment - Spring 2009

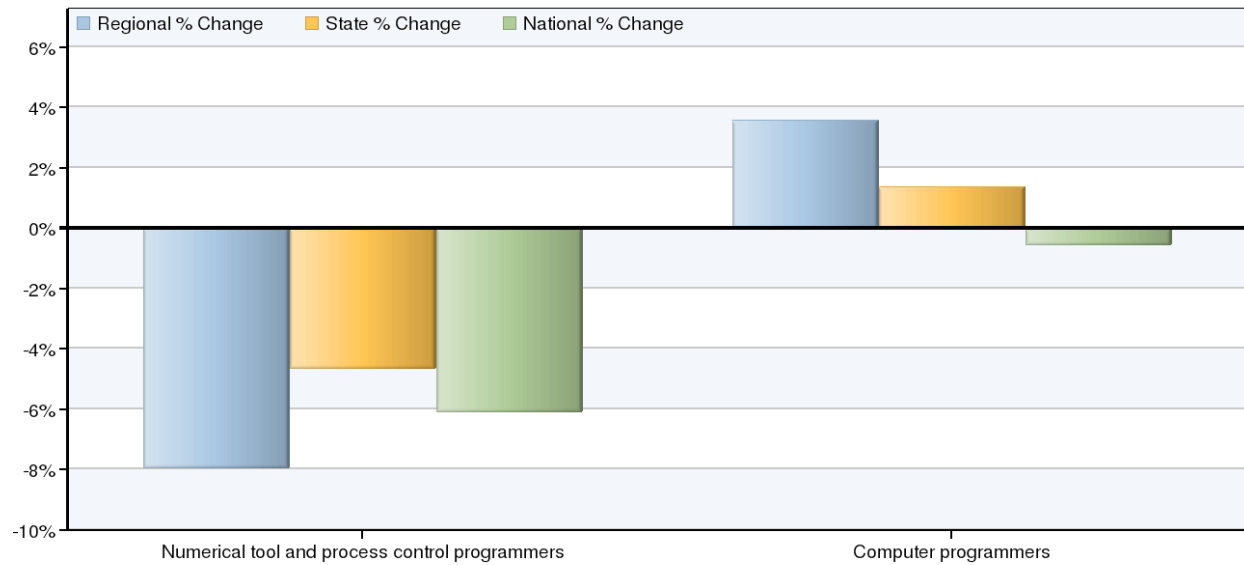
Occupational Breakdown



SOC Code	Description	2008 Jobs	2013 Jobs	Annual Openings	Replacement Jobs	Hourly Earnings	Education Level
51-4012	Numerical tool and process control programmers	415	382	1	39	\$27.05	Long-term on-the-job training
15-1021	Computer programmers	16,780	17,381	538	2,091	\$36.31	Bachelor's degree
	Total	17,194	17,762	540	2,130	\$36.10	

Source: EMSI Complete Employment - Spring 2009

Occupational Change



SOC Code	Description	Regional Change	Regional % Change	State % Change	National % Change
51-4012	Numerical tool and process control programmers	-33	-8%	-5%	-6%
15-1021	Computer programmers	601	4%	1%	-1%

Source: EMSI Complete Employment - Spring 2009

Occupation Distribution



County	2008 Jobs
Santa Clara, CA (6085)	7,256
Alameda, CA (6001)	3,889
San Francisco, CA (6075)	2,287
San Mateo, CA (6081)	1,883
Contra Costa, CA (6013)	1,396
Marin, CA (6041)	482

Source: EMSI Complete Employment - Spring 2009

Data Sources and Calculations

Occupation Data

Organizing regional employment information by occupation provides a workforce-oriented view of the regional economy. EMSI's occupation data are based on EMSI's industry data and regional staffing patterns taken from the Occupational Employment Statistics program (U.S. Bureau of Labor Statistics). Wage information is partially derived from the American Community Survey. The occupation-to-program (SOC-to-CIP) crosswalk is based on one from the U.S. Department of Education, with customizations by EMSI.

State Data Sources

This report uses state data from the following agencies: California Labor Market Information Department.